

Wrangler®

INDUSTRIAL 2023

Wrangler® 
FLAME RESISTANT

Wrangler®


Wrangler
RUGGED WEAR®
Wrangler



WRANGLER FR FEATURES AND TECHNOLOGIES

ALL BOTTOMS:

- ARC-Resistant Button Waistband Closure
- High Quality Brass Zipper with Nomex Zipper Tape
- Flame Resistant Pocketing
- Nomex Thread Used on All Garment Seams
- Safety Orange Outside ID for High Visibility

WRANGLER BOTTOMS:

COWBOY CUT	RETRO	20X	WOMEN'S
13MWZ Original Fit	77 Slim Boot	42 Vintage Boot	Mae Mid-Rise
31MWZ Relaxed Fit			URJ High-Rise
36MWZ Slim Fit			
47MWZ Regular Fit			

RIGGS FR

- Carpenter
- 5-Pocket
- Technician

FREQUENTLY ASKED QUESTIONS

HOW DO I CHOOSE THE CORRECT FLAME-RESISTANT GARMENTS?

Garments are specified based on the employer's evaluation of workplace hazards. Protective garments, which function as wearing apparel for normal work activities, must be comfortable and durable while achieving appearance that is acceptable to both the employer and the wearer. In addition to these general considerations, there may be other hazards present such as chemical or molten substance exposure. Finally, these multi-use garments must be able to withstand laundering to remove soils and flammable contaminants and be returned to service without excessive color loss, fuzzing/pilling (surface appearance change) or excessive shrinkage.

WHAT IS THE EMPLOYER'S RESPONSIBILITY?

Under paragraph 5a1, the General Duty clause of the federal OSHA Act, it is the employer's responsibility to identify risks and hazards in the workplace and seek out appropriate protective garments and equipment for the protection of workers. In making this hazard assessment, the employer must consider the risks present and the most appropriate means of addressing those risks. Where ignition risks are present, flame-resistant protective apparel can become a prudent part of an action plan to address these concerns.

STAINED or SOILED GARMENT

If your flame-resistant garment becomes stained or soiled, and you cannot confirm that the contaminants have been completely removed from the garment, please be aware that the garment may be compromised.

GARMENT REPAIR and MAINTENANCE

For information regarding the repair and maintenance of flame-resistant fabrics, please see ASTM Standard F 1449 (Industrial Laundering of Flame, Thermal and Arc Resistant Clothing) and ASTM F 2757 (Guide for Home Laundering Care and Maintenance of Flame, Thermal and Arc Resistant Clothing). When making repairs to the garment, you must use materials equivalent to the original materials. If trim items such as zippers or labels need repair, they must also be repaired with materials equivalent to the original materials.

GARMENT LIFE

When laundered by recommended procedures, durable flame-resistant fabrics are guaranteed to be flame-resistant for the useful life of the garment. Garment life will vary depending on wear and laundering conditions.

ADVANCED COMFORT



MOVES WITH YOU
4-WAY FLEX TECHNOLOGY

This unique fabric construction, exclusive to The Wrangler® Brand, features 4-Way Flex technology for a comfortable fit and added mobility as you work. Durable and dependable, Advanced Comfort Denim lasts two times longer.



Crafted With USA Made Fabric

Wherever you see this icon, know that your garment was crafted from fabric produced in the USA!

PROCESSING / CLEANING

FR garments can be home laundered – follow care instructions.

Flame resistant garments can be washed with other garments but it is recommended that you sort and wash them separately to prevent contamination with other possibly flammable fibers.

It is recommended that you turn your garment inside out.

You can use your household laundry detergent but be sure it does NOT contain fabric softener or bleach. Fabric softener can coat the fabric making it no longer flame resistant. Fabric softener can also act as fuel in the event of a fire. Bleach and Hydrogen Peroxide should NEVER be used because they can break down the Flame Resistant treatment on your fabric.

Also, NEVER starch your garments. Starch is a propellant and propellants are almost always flammable.

“Soft” water (less than 7 grains per gallon of hardness) is required for home laundering flame resistant garments. “Hard” water can leave residue on garments that mask flame resistance.

If needed, steam or dry iron garments at the temperature indicated on care label.

Dry cleaning is optional but not recommended unless necessary to remove stains. Confirm that no starch is used in the process.

NOTES

DO NOT USE DEET on Flame Resistant Clothing.

To learn more about FR clothing appropriate for your line of work, visit [OSHA.gov](https://www.osha.gov).

FR Standards Overview

UNITED STATES CLASSIFICATIONS

ANSI/ISEA 107-2020 ansi.org

American National Standard on performance, classification, and selection of high-visibility safety apparel (HVSA).

ANSI/ISEA 107-2020 sets forth requirements for high-visibility garments to help ensure workers in a range of industries are easily seen during the day, at night, and in low lighting. Additionally, this standard guides workers in choosing the appropriate personal protection equipment (PPE) for their specific work environments and activities, requiring that garments be classified as type O (off-road), type R (roadway and temporary traffic control), or type P (public safety activities). If not FR, the garment is clearly labeled with “This garment is not flame-resistant as defined by ANSI/ISEA 107-2020 Section 10.5.”

ASTM standards.ieee.org

ASTM F1506

The American Society for Testing and Materials (ASTM) international specification outlines the minimum design characteristics and performance requirements for occupational apparel worn by electric utility line workers and others exposed to momentary electric arc flash and related thermal hazards, such as exposure to open flame and radiant heat.

CAT RATINGS



Category (CAT) requirement is a rating assigned to dual-hazard FR workwear that indicates the level of protection a garment provides wearers against injury in the event of an arc flash. CAT 0 represents the lowest level of rated protection while CAT 4 represents the highest level of rated protection. Most of Wrangler's FR workwear falls within CAT 2 based on arc thermal protective value (ATPV) ratings.

NESC standards.ieee.org

National Electrical Safety Code

The National Electrical Safety Code® (NESC) provides guidance on safeguarding employees installing, operating, and maintaining electric power and communication utility systems that supply residential, commercial, and industrial buildings. This standard protects workers from arc flash exposure by requiring employers to perform hazard risk analyses for employees that work on or near energized parts or equipment. If the incident energy is greater than 2 cal/cm², Arc Rated (AR) PPE is required.

NFPA 2112 nfpa.org/2112

A National Fire Protection Association (NFPA) standard on FR clothing to help protect industrial personnel against short-duration thermal exposures from fire. Essential for manufacturers and certifying agencies, this standard specifies performance requirements and test methods for FR fabrics and garments to better prevent flash fire exposure and injury.

NFPA 2113 nfpa.org/2113

A National Fire Protection Association (NFPA) standard on the proper selection, care, use, and maintenance requirements of FR garments to help protect industrial personnel against short-duration thermal exposures from fire. Developed primarily for garment end users to reduce health and safety risks, as well as contamination and damage of FR garments. This standard specifies the selection, care, use, and maintenance requirements for such garments that are compliant with NFPA® 2112: Standard on Flame-Resistant Garments for Protection of Industrial Personnel Against Flash Fire.

NFPA 70E nfpa.org/70e

Standard for Electrical Safety in the Workplace®.

Originally developed at OSHA's request, NFPA 70E® states requirements for safe work practices to protect personnel by minimizing exposure to major electrical hazards. NFPA 70E also assists companies and employees in avoiding potential workplace injuries and fatalities due to shock, electrocution, arc flash, or arc blast, as well as complying with OSHA 1910 Subpart S and OSHA 1926 Subpart K.

OSHA osha.gov

OSHA 29 CFR 1910.26

This section of the Occupational Safety and Health Administration's (OSHA) 29 CFR 1910.269 covers the operation and maintenance of electric power generation, control, transformation, transmission, distribution lines, and equipment.

UL® ulse.org

Underwriters' Laboratories® (UL) develops safety-related certification, validation, testing, inspection, auditing, advising, and training services to a wide range of clients, including manufacturers, policymakers, regulators, retailers, service companies, and consumers. Wrangler® utilizes UL Solutions to ensure compliance with the NFPA 2112 standard.





REGULAR FIT



ORIGINAL FIT



5 POCKET | RELAXED FIT



TECHNICIAN | RELAXED FIT



CARPENTER | RELAXED FIT



Crafted With USA Made Fabric

Crafted With USA Made Fabric

Crafted With USA Made Fabric

Crafted With USA Made Fabric

Crafted With USA Made Fabric



10FRAC47D
a

FRAC47D
Dark Tint
12.75 oz.
98% Cotton/2% Spandex
ATPV 21 CAL/CM²
Sizes | A701



10FR13MDW
a

FR13MDW
Dark Wash
12.75 oz.
98% Cotton/2% Spandex
ATPV 21 CAL/CM²
Sizes | A64A



10FRAC50M
a

FRAC50M
Midstone
12.5 oz.
94% Cotton/5% Polyester
1% Spandex
ATPV 15 CAL/CM²
Sizes | A63B



10FRAC45M

FRAC45M
Midstone
12 oz.
93% Cotton/6% Polyester
1% Spandex
ATPV 17 CAL/CM²
Sizes | A63B



10FR3W02K
a

FR3W02K
Khaki
8.75 oz.
98% Cotton/2% Spandex Canvas
ATPV 8.8 CAL/CM²
Sizes | A63B

10FR3WACB
a

FR3WACB
Navy
8.75 oz.
98% Cotton/2% Spandex Canvas
ATPV 8.8 CAL/CM²
Sizes | A63B

10FR3WACG
a

FR3WACG
Loden
8.75 oz.
98% Cotton/2% Spandex Canvas
ATPV 8.8 CAL/CM²
Sizes | A63B

2112

CAT 2



2112

CAT 2



A64A																		
WAIST	28	29	30	31	32	33	34	35	36	38	40	42	44	46	48	50	52	54
Inseam																		
30																		
32																		
34																		
36																		
38																		

A701																				
WAIST	29	30	31	32	33	34	35	36	38	40	42	44	46	48	50	52	54	56	58	60
Inseam																				
30																				
32																				
34																				
36																				
38																				

A63B																				
WAIST	29	30	31	32	33	34	35	36	38	40	42	44	46	48	50	52	54	56	58	60
Inseam																				
30																				
32																				
34																				
36																				



Wrangler
FLAME RESISTANT

FR ADVANCED COMFORT

FR DENIM AND PANTS

Wrangler
FLAME RESISTANT



SLIM BOOT



★
Crafted With USA Made Fabric

10FR77MTM **FR77MTM**
a Timothy Midstone
11.75 oz.
93% Cotton/6% Polyester/
1% Spandex
ATPV 17 CAL/CM²
Sizes | A66A

VINTAGE BOOT



★
Crafted With USA Made Fabric

10FR77MCN **FR77MCN**
a Caden Dark Tint
11.75 oz.
93% Cotton/6% Polyester/
1% Spandex
ATPV 17 CAL/CM²
Sizes | A66A



★
Crafted With USA Made Fabric

10FRAC42D **FRAC42D**
a Dark Denim
12.5 oz.
94% Cotton/5% Polyester/
1% Spandex
ATPV 15 CAL/CM²
Sizes | A66A

ORIGINAL FIT



★
Crafted With USA Made Fabric

10FR13MWZ **FR13MWZ**
a Prewash
14.75 oz.
100% Cotton
ATPV 24 CAL/CM²
Sizes | A64A

10FR13MMS **FR13MMS**
a Stonewash
14.75 oz.
100% Cotton
ATPV 24 CAL/CM²
Sizes | A53G

RELAXED FIT



★
Crafted With USA Made Fabric

10FR31MWZ **FR31MWZ**
a Prewash
14.75 oz.
100% Cotton
ATPV 24 CAL/CM²
Sizes | A64A

SLIM FIT



★
Crafted With USA Made Fabric

10FR36MWZ **FR36MWZ**
a Prewash
14.75 oz.
100% Cotton
ATPV 24 CAL/CM²
Sizes | A69A

MEN'S FR

2112

CAT 2

Wrangler
RETRO

Wrangler
20X

2112

CAT 2



A66A																		
WAIST	28	29	30	31	32	33	34	35	36	38	40	42	44	46	48	50	52	54
INSEAM																		
30																		
32																		
34																		
36																		
38																		

A53G														
WAIST	28	29	30	31	32	33	34	35	36	38	40	42	44	46
INSEAM														
30														
32														
34														
36														
38														

A69A																			
WAIST	27	28	29	30	31	32	33	34	35	36	38	40	42	44	46	48	50	52	54
INSEAM																			
29																			
30																			
32																			
34																			
36																			
38																			

A64A																			
WAIST	28	29	30	31	32	33	34	35	36	38	40	42	44	46	48	50	52	54	
INSEAM																			
30																			
32																			
34																			
36																			
38																			



Wrangler **FR**
FLAME RESISTANT

FR DENIM AND PANTS

REGULAR FIT LIGHTWEIGHT



Crafted With USA Made Fabric

10FR47MLW **FR47MLW**
Prewash
11.75 oz.
100% Cotton
ATPV 21 CAL/CM²
Sizes | A66A

VINTAGE BOOT



Crafted With USA Made Fabric

10FR42MWR **FR42MWR**
Rinse Wash
13.4 oz.
68% Cotton/
32% Modacrylic
ATPV 18 CAL/CM²
Sizes | A54C



Crafted With USA Made Fabric

10FR42MWM **FR42MWM**
Midstone
13.4 oz.
68% Cotton/
32% Modacrylic
ATPV 18 CAL/CM²
Sizes | A54C

5 POCKET | RELAXED FIT



Crafted With USA Made Fabric

10FR3W050 **FR3W050**
Denim
14.75 oz.
100% Cotton
ATPV 22 CAL/CM²
Sizes | A63B

CARPENTER | RELAXED FIT



Crafted With USA Made Fabric

10FR3W020 **FR3W020**
Denim
14.75 oz.
100% Cotton
ATPV 22 CAL/CM²
Sizes | A63B

MEN'S FR



2112

CAT 2

Wrangler
20X

2112

CAT 2

Wrangler
RIGGS
WORKWEAR

		A66A																	
WAIST		28	29	30	31	32	33	34	35	36	38	40	42	44	46	48	50	52	54
Inseam	30
	32
	34
	36
	38

		A54C												
WAIST		28	29	30	31	32	33	34	35	36	38	40	42	
Inseam	30	
	32	
	34	
	36	
	38	

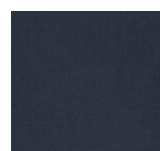
		A63B																			
WAIST		29	30	31	32	33	34	35	36	38	40	42	44	46	48	50	52	54	56	58	60
Inseam	30
	32
	34
	36
	38



BUTTON CLOSURE | RELAXED FIT



TWO FLAP POCKETS



10FR3W01N *FR3W01N*
Navy | 5.4 oz.
50% Viscose FR/33% Meta Aramid/
10% Nylon/5% Para Aramid/
2% Anti-static Fiber
ATPV 9.5 CAL/CM²
Sizes | 011B



10FR3W01G *FR3W01G*
Grey | 5.4 oz.
50% Viscose FR/33% Meta Aramid/
10% Nylon/5% Para Aramid/
2% Anti-static Fiber
ATPV 9.5 CAL/CM²
Sizes | 011B



10FR3W01K *FR3W01K*
Khaki | 5.4 oz.
50% Viscose FR/33% Meta Aramid/
10% Nylon/5% Para Aramid/
2% Anti-static Fiber
ATPV 9.5 CAL/CM²
Sizes | 011B



10FR3W01L *FR3W01L*
Light Blue | 5.4 oz.
50% Viscose FR/33% Meta Aramid/
10% Nylon/5% Para Aramid/
2% Anti-static Fiber
ATPV 9.5 CAL/CM²
Sizes | 011B



UPF 50+

SNAP CLOSURE | CLASSIC FIT

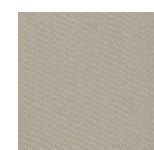


BUTTON CLOSURE | RELAXED FIT



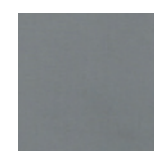
10FR12127 *FR12127*
Denim
7.5 oz.
100% Cotton
ATPV 9.3 CAL/CM²
Sizes | 011B

Crafted With USA Made Fabric



10FR12140 *FR12140*
Khaki
7.5 oz.
100% Cotton
ATPV 9.2 CAL/CM²
Sizes | 011B

Crafted With USA Made Fabric



10FR127CH *FR127CH*
Charcoal
6.5 oz.
88% Cotton/12% Nylon
ATPV 9.5 CAL/CM²
Sizes | 011B

Crafted With USA Made Fabric



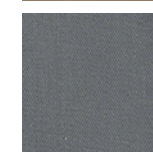
10FR124MM *FR124MM*
Khaki/White Plaid
6.5 oz.
88% Cotton/12% Nylon
ATPV 9.5 CAL/CM²
Sizes | 011B

Crafted With USA Made Fabric



10FR3W5KH *FR3W5KH*
Khaki
7.5 oz.
100% Cotton
ATPV 9.2 CAL/CM²
Sizes | 011B

Crafted With USA Made Fabric



10FR3W5GY *FR3W5GY*
Grey
7.5 oz.
100% Cotton
ATPV 9.2 CAL/CM²
Sizes | 011B



UPF 50+

2112
CAT 2



011B									
REG	S	M	L	XL	XXL	LT	XLT	3XT	4X
TALL									
BIG									

2112
CAT 2



011B									
REG	S	M	L	XL	XXL	LT	XLT	3XT	4X
TALL									
BIG									



MEN'S FR



HENLEY | RELAXED FIT

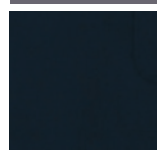


★
Crafted With USA Made Fabric



10FR3W7CR
a

FR3W7CR
Castle Rock
7.75 oz.
100% Cotton
ATPV 8.9 CAL/CM²
Sizes | 0103



10FR3W7NY
a

FR3W7NY
Navy
7.75 oz.
100% COTTON
ATPV 8.9 CAL/CM²
Sizes | 0103

2112

CAT
2

0103

	M	L	XL	XXL	LT	XLT	2XT	3XT	3X	4X
REG	•	•	•	•	•	•	•	•	•	•
TALL					•	•	•	•	•	•
BIG									•	•



CASH | BOOT CUT



★
Crafted With USA Made Fabric

10FRW10RN
a

FRW10RN
Rinse Wash
13.4 oz.
68% Cotton/
32% Modacrylic
ATPV 18 CAL/CM²
Sizes | G31J



★
Crafted With USA Made Fabric

10FRW10CH
a

FRW10CH
Crosshatch
13.75 oz.
100% Cotton
ATPV 19 CAL/CM²
Sizes | G31J

Wrangler
The Ultimate Riding Jeans

2112

CAT
2

G31J

	1	3	5	7	9	11	13	15	17	19
30	•	•	•	•	•	•	•	•	•	•
32	•	•	•	•	•	•	•	•	•	•
34	•	•	•	•	•	•	•	•	•	•
36	•	•	•	•	•	•	•	•	•	•

WOMEN'S FR



UTILITY | STRAIGHT FIT



Crafted With USA Made Fabric

10FRW31GK *FRW31GK*
Golden Khaki
8.75oz
98% Cotton/2% Spandex
Canvas
ATPV 8.8 CAL/CM²
Sizes | G27Y



STRETCH

MAE | BOOT CUT



Crafted With USA Made Fabric

10FRAC9BF *FRAC9BF*
Mae | Bakersville
12.5 oz.
69% Cotton/
30% Modacrylic/
1% Spandex
ATPV 20 CAL/CM²
Sizes | G31J



STRETCH



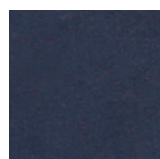
Crafted With USA Made Fabric

10FRAC1DI *FRAC1DI*
Mae | Dark Indigo
12.5 oz.
94% Cotton/
5% Polyester/
1% Spandex
ATPV 15.0 CAL/CM²
Sizes | G31J

SNAP CLOSURE

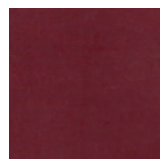


UPF 50+



10FRLW03N *FRLW03N*
Navy
Snap Closure
6.5 oz.
88% Cotton/12% Nylon
ATPV 9.5 CAL/CM²
Sizes | 106B

Crafted With USA Made Fabric



10FRLW04R *FRLW04R*
Burgundy
Snap Closure
6.5 oz.
88% Cotton/12% Nylon
ATPV 9.5 CAL/CM²
Sizes | 106B

Crafted With USA Made Fabric



10FRLW06T *FRLW06T*
Khaki
Snap Closure
6.5 oz.
88% Cotton/12% Nylon
ATPV 9.5 CAL/CM²
Sizes | 106B

Crafted With USA Made Fabric



10FRLW11B *FRLW11B*
Blue
Snap Closure
5.4 oz.
50% Viscose FR/33% Meta Aramid/ 10% Nylon/
5% Para Aramid/2% Anti-static Fiber
ATPV 9.5 CAL/CM²
Sizes | 106B

112320094 *FRLW11G*
Grey
Snap Closure
5.4 oz.
50% Viscose FR/33% Meta Aramid/ 10% Nylon/
5% Para Aramid/2% Anti-static Fiber
ATPV 9.5 CAL/CM²
Sizes | 106B

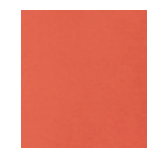


1/4 ZIP PULLOVER | FLEECE

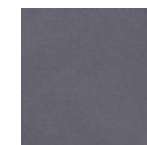


WOMEN'S FR

Crafted With USA Made Fabric



10FRLW11H *FRLW11H*
Hot Sauce
12.5 oz.
95% Cotton/5% Spandex
ATPV 17 CAL/CM²
Sizes | 0066



10FRLW13H *FRLW13H*
Charcoal
12.5 oz.
95% Cotton/5% Spandex
ATPV 17 CAL/CM²
Sizes | 0066

2112

CAT 2



106B
S M L XL XXL XXXL

0066
XS S M L XL XXL



G27Y	
Inseam	Waist
30	0 2 4 6 8 10 12 14 16 18 20
32	2 4 6 8 10 12 14 16 18 20
34	4 6 8 10 12 14 16 18 20

G31J	
Inseam	Waist
30	1 3 5 7 9 11 13 15 17 19
32	3 5 7 9 11 13 15 17 19
34	5 7 9 11 13 15 17 19
36	7 9 11 13 15 17 19

2112

CAT 2

Wrangler
RETRO



WORKHORSE
5 POCKET



WORKHORSE | RELAXED FIT



Sits At Waist
1000 Denier **CORDURA®** Fabric
Lined Back Pockets
Right Side Hammer Loop
Imported



TAPE MEASURE
REINFORCEMENT



103W001AI

3W001AI
Antique Indigo
14.5 oz.
100% Cotton
durashield® Denim
Sizes | A58J

		A52M															
		30	31	32	33	34	35	36	38	40	42	44	46	48	50	52	54
Inseam	30	•	•	•	•	•	•	•	•	•	•	•	•	•	•	•	
	32	•	•	•	•	•	•	•	•	•	•	•	•	•	•	•	
	34	•	•	•	•	•	•	•	•	•	•	•	•	•	•	•	
	36	•	•	•	•	•	•	•	•	•	•	•	•	•	•	•	

		A58J																		
		30	31	32	33	34	35	36	38	40	42	44	46	48	50	52	54	56	58	60
Inseam	30	•	•	•	•	•	•	•	•	•	•	•	•	•	•	•	•	•	•	•
	32	•	•	•	•	•	•	•	•	•	•	•	•	•	•	•	•	•	•	•
	34	•	•	•	•	•	•	•	•	•	•	•	•	•	•	•	•	•	•	•
	36	•	•	•	•	•	•	•	•	•	•	•	•	•	•	•	•	•	•	•

CORDURA® IS A REGISTERED TRADEMARK OF INVISTA FOR DURABLE FABRICS.

5 POCKET | RELAXED FIT



Sits At Waist
Oversized Watch Pocket
Imported



TAPE MEASURE
REINFORCEMENT



103W050AI

3W050AI
Antique Indigo
14.5 oz.
100% Cotton
durashield® Denim
Sizes | A52M

TECHNICAL CARPENTER PANT
PERFORMANCE WORK PANT



TECHNICAL CARPENTER PANT



Nylon Reinforced Back Pockets,
Knee Pads, Hem Guard (Kickplate),
Utility Pockets
Pockets to Insert Knee Pads
Reflective Trim Throughout Pant
to Keep You Safe and Seen
Multiple Utility Tool Pockets
Performance Waistband
Imported



TAPE MEASURE
REINFORCEMENT



WATER
REPELLENT



112335410

a Dark Khaki
6.4 oz. Ripstop
86% Cotton/
13% Nylon/ 1% Elastane
Sizes | A52M

		A52M															
		30	31	32	33	34	35	36	38	40	42	44	46	48	50	52	54
Inseam	30	•	•	•	•	•	•	•	•	•	•	•	•	•	•	•	
	32	•	•	•	•	•	•	•	•	•	•	•	•	•	•	•	
	34	•	•	•	•	•	•	•	•	•	•	•	•	•	•	•	
	36	•	•	•	•	•	•	•	•	•	•	•	•	•	•	•	

PERFORMANCE WORK PANT



Nylon Reinforced Pockets
Double Knee
Gusset Crotch
Reflective Trim
Tool/Utility Pockets
Performance Waistband
Imported



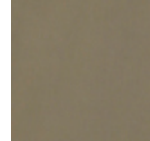
STRETCH



TAPE MEASURE
REINFORCEMENT

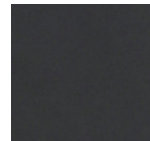


WATER
REPELLENT



112335295

Dark Khaki
7.3 oz.
90% Nylon/ 10% Spandex
Doubleweave
Sizes | A52M



112335296

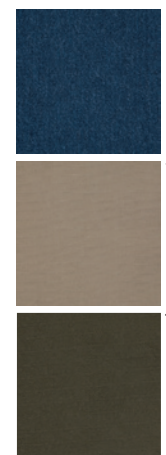
Grey
7.3 oz.
90% Nylon/ 10% Spandex
Doubleweave
Sizes | A52M

WRANGLER RIGGS

CARPENTER | RELAXED FIT



Sits At Waist
1000 Denier **CORDURA**® Fabric Lined Back Pockets
Tool Pocket Detail
Right Side Hammer Loop
Imported



103W020AI **3W020AI**
Antique Indigo
14.5 oz.
100% Cotton **durashield**® Denim
Sizes | A61A

103W020DK **3W020DK**
Dark Khaki
10 oz.
100% Cotton Ripstop
Sizes | A41S

103W020LD **3W020LD**
Loden
10 oz.
100% Cotton Ripstop
Sizes | A58J

		A41S												
		WAIST	30	31	32	33	34	35	36	38	40	42	44	46
Inseam	29													
	30	*	*	*	*	*	*	*	*	*	*	*	*	*
	32	*	*	*	*	*	*	*	*	*	*	*	*	*
	34	*	*	*	*	*	*	*	*	*	*	*	*	*
	36	*	*	*	*	*	*	*	*	*	*	*	*	*

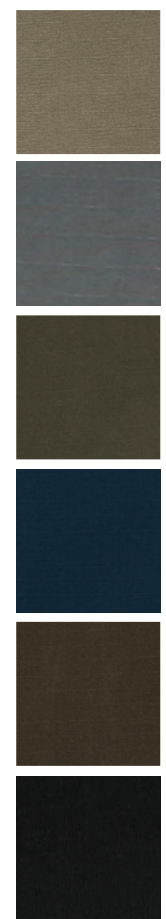
		A55A																
		WAIST	30	31	32	33	34	35	36	38	40	42	44	46	48	50	52	54
Inseam	29																	
	30	*	*	*	*	*	*	*	*	*	*	*	*	*	*	*	*	*
	32	*	*	*	*	*	*	*	*	*	*	*	*	*	*	*	*	*
	34	*	*	*	*	*	*	*	*	*	*	*	*	*	*	*	*	*
	36	*	*	*	*	*	*	*	*	*	*	*	*	*	*	*	*	*

		A61A																					
		WAIST	30	31	32	33	34	35	36	38	40	42	44	46	48	50	52	54	56	58	60		
Inseam	29																						
	30	*	*	*	*	*	*	*	*	*	*	*	*	*	*	*	*	*	*	*	*	*	*
	32	*	*	*	*	*	*	*	*	*	*	*	*	*	*	*	*	*	*	*	*	*	*
	34	*	*	*	*	*	*	*	*	*	*	*	*	*	*	*	*	*	*	*	*	*	*
	36	*	*	*	*	*	*	*	*	*	*	*	*	*	*	*	*	*	*	*	*	*	*

RANGER | RELAXED FIT



1000 Denier **CORDURA**® Fabric Lined Back Pockets
Reinforced Knees with Dirt Drop Vent
Roomy Side Cargo Pockets with Flaps and Concealed Snaps
Right Side Hammer Loop
Imported



103W060BR **3W060BR**
Bark
10 oz.
100% Cotton Ripstop
Sizes | A58J

103W060ST **3W060ST**
Slate
10 oz.
100% Cotton Ripstop
Sizes | A42R

103W060LD **3W060LD**
Loden
10 oz.
100% Cotton Ripstop
Sizes | A58J

103W060NY **3W060NY**
Navy
10 oz.
100% Cotton Ripstop
Sizes | A41S

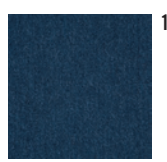
103W060DB **3W060DB**
Dark Brown
10 oz.
100% Cotton Ripstop
Sizes | A55A

103W060BL **3W060BL**
Black
10 oz.
100% Cotton Ripstop
Sizes | A52M

CONTRACTOR | RELAXED FIT



1000 Denier **CORDURA**® Fabric Lined Back Pockets
Tool Pockets with Utility Loop
Right Side Tool Pocket
Imported



103W040AI **3W040AI**
Antique Indigo
12 oz.
100% Cotton **durashield**® Denim
Sizes | A52M

		A42R												
		WAIST	30	31	32	33	34	35	36	38	40	42	44	46
Inseam	30	*	*	*	*	*	*	*	*	*	*	*	*	*
	32	*	*	*	*	*	*	*	*	*	*	*	*	*
	34	*	*	*	*	*	*	*	*	*	*	*	*	*
	36	*	*	*	*	*	*	*	*	*	*	*	*	*

		A55A																
		WAIST	30	31	32	33	34	35	36	38	40	42	44	46	48	50	52	54
Inseam	29																	
	30	*	*	*	*	*	*	*	*	*	*	*	*	*	*	*	*	*
	32	*	*	*	*	*	*	*	*	*	*	*	*	*	*	*	*	*
	34	*	*	*	*	*	*	*	*	*	*	*	*	*	*	*	*	*
	36	*	*	*	*	*	*	*	*	*	*	*	*	*	*	*	*	*

		A58J																				
		WAIST	30	31	32	33	34	35	36	38	40	42	44	46	48	50	52	54	56	58	60	
Inseam	30	*	*	*	*	*	*	*	*	*	*	*	*	*	*	*	*	*	*	*	*	*
	32	*	*	*	*	*	*	*	*	*	*	*	*	*	*	*	*	*	*	*	*	*
	34	*	*	*	*	*	*	*	*	*	*	*	*	*	*	*	*	*	*	*	*	*
	36	*	*	*	*	*	*	*	*	*	*	*	*	*	*	*	*	*	*	*	*	*

CORDURA® IS A REGISTERED TRADEMARK OF INVISTA FOR DURABLE FABRICS.

WRANGLER RIGGS

TECHNICIAN | RELAXED FIT



Sits At Waist
Right Side Cell Phone Pocket
Imported

- 103W045DK** *3W045DK*
Dark Khaki
6.5 oz.
100% Cotton Ripstop
Sizes | A41S
- 103W045CH** *3W045CH*
Charcoal
6.5 oz.
100% Cotton Ripstop
Sizes | A41S
- 103W045LD** *3W045LD*
Loden
6.5 oz.
100% Cotton Ripstop
Sizes | A41S

A41S	
WAIST	30 31 32 33 34 35 36 38 40 42 44 46
Inseam	30
	32
	34
	36

UTILITY | RELAXED FIT



1000 Denier **CORDURA**® Fabric Lined Back Pockets
Reinforced Front Panels with Wide Dirt Drop Vent
Right Side Tool Pocket
Right Side Hammer Loop
Imported

- 103W030AI** *3W030AI*
Antique Indigo
14.5 oz.
100% Cotton **durashield**® Denim
Sizes | A52M

A52M	
WAIST	30 31 32 33 34 35 36 38 40 42 44 46 48 50 52 54
Inseam	30
	32
	34
	36

CORDURA® IS A REGISTERED TRADEMARK OF INVISTA FOR DURABLE FABRICS.

UTILITY | REGULAR STRAIGHT



1000 Denier **CORDURA**® Fabric Lined Back Pockets
Regular Seat and Thigh
Reinforced Front Panels with Articulated Knee for Ease of Movement
Side Utility Pocket with Cordura Lining
Kick Plate at Bottom Hem
Imported

- 103W031PG** *3W031PG*
Pinstripe Grey
7 oz.
97% Cotton/3% Spandex
Sizes | A52M
- 103W031EW** *3W031EW*
Elmwood
7 oz.
97% Cotton/3% Spandex
Sizes | A52M
- 103W031FN** *3W031FN*
Forest Night
7 oz.
97% Cotton/3% Spandex
Sizes | A52M

WORK | REGULAR FIT



1000 Denier **CORDURA**® Fabric Lined Back Pockets
Front Patch Pockets
10" Inseam
Imported

- 103W341GK** *3W341GK*
Golden Khaki
8.25 oz. Ripstop
65% Cotton/
30% Polyester/5% Elastane
Sizes | A18E
- 103W341GY** *3W341GY*
Grey
8.25 oz. Ripstop
65% Cotton/
30% Polyester/5% Elastane
Sizes | A18E

A18E	
WAIST	30 31 32 33 34 36 38 40 42 44 46 48 50 52 54 56 58 60
Inseam	30
	32
	34
	36

CORDURA® IS A REGISTERED TRADEMARK OF INVISTA FOR DURABLE FABRICS.

RANGER | RELAXED FIT



1000 Denier **CORDURA**® Fabric Lined Back Pockets
Right Side Hammer Loop
Reinforced Front Panels
Side Cargo Pockets with Flaps and Concealed Snaps
11" Inseam
Imported

- 103W360BR** *3W360BR*
Bark
10 oz.
100% Cotton Ripstop
Sizes | A18E
- 103W360LD** *3W360LD*
Loden
10 oz.
100% Cotton Ripstop
Sizes | A18E
- 103W360ST** *3W360ST*
Slate
10 oz.
100% Cotton Ripstop
Sizes | A18E



Wrangler
RIGGS
WORKWEAR

SHORTS

RANGER | RELAXED FIT



TAPE MEASURE
REINFORCEMENT

1000 Denier **CORDURA**® Fabric
Lined Back Pockets
Right Side Hammer Loop
Reinforced Front Panels
Side Cargo Pockets with Flaps
and Concealed Snaps
11" Inseam
Imported

	103W362LD	3W362LD Loden 8.5 oz. Canvas 98% Cotton/ 2% Spandex Sizes A18E
	103W362DK	3W362DK Dark Khaki 8.5 oz. Canvas 98% Cotton/ 2% Spandex Sizes A18E

A16Z																
WAIST	30	31	32	33	34	35	36	38	40	42	44	46	48	50	52	54

TECHNICIAN | RELAXED FIT



TAPE MEASURE
REINFORCEMENT

Sits At Waist
Right Side Cell Phone Pocket
10 1/2" Inseam
Imported

	103W345DK	3W345DK Dark Khaki 6.5 oz. 100% Cotton Ripstop Sizes A16Z
	103W345LD	3W345LD Loden 6.5 oz. 100% Cotton Ripstop Sizes A16Z
	103W345DB	3W345DB Dark Brown 6.5 oz. 100% Cotton Ripstop Sizes A16Z

A18E																		
WAIST	30	31	32	33	34	36	38	40	42	44	46	48	50	52	54	56	58	60

TWILL



room2move® Fit with Side Gusset Detail for
Greater Range of Motion
Peached Finish and Garment Washed for Softness
Button-Down Collar
Two Button Front Chest Pockets
Two Button Adjustable Cuffs
Hidden Utility Loop
1/12 Solid
Imported

	103W501KH	3W501KH Khaki 7 oz. 100% Cotton Twill Sizes 09AA
	103W501NV	3W501NV Navy 7 oz. 100% Cotton Twill Sizes 09AA
	103W501FG	3W501FG Forest Green 7 oz. 100% Cotton Twill Sizes 09AA
	103W501BG	3W501BG Burgundy 7 oz. 100% Cotton Twill Sizes 09AA
	103W501BK	3W501BK Black 7 oz. 100% Cotton Twill Sizes 009J

WORK SHIRTS

Wrangler
RIGGS
WORKWEAR



DENIM



room2move® Fit
Two Button-Front Chest Pockets
Button-Down Collar
Two Button Adjustable Cuffs
Hidden Utility Loop
Imported

	103W510AN	3W510AN Antique 6.5 oz. 100% Cotton Denim Sizes 010V
--	-----------	---

09AA						
M	L	XL	XXL	LT	XLT	2XT 3XT 4XT

010V						
M	L	XL	XXL	LT	XLT	2XT 3XT 3X 4X

009J						
REG	TALL					

WRANGLER RIGGS



POCKET T-SHIRT



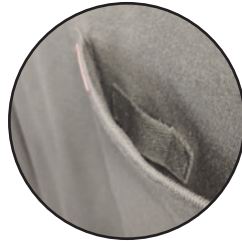
POCKET T-SHIRT



Comfortable Relaxed Fit
Vented Taped Sideseams
Left Chest Pocket
Taped Neck Seam
Tagless Label
Imported



Comfortable Relaxed Fit
Vented Taped Sideseams
Left Chest Pocket
Taped Neck Seam
Tagless Label
Imported



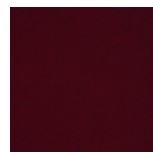
HIDDEN UTILITY LOOP



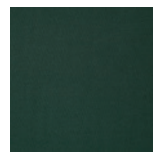
103W700NV **3W700NV**
a Navy
7 oz.
100% Cotton Ring
Spun Jersey
Sizes | 0103



103W700BK **3W700BK**
a Black
7 oz.
100% Cotton Ring
Spun Jersey
Sizes | 0103



103W710BG **3W710BG**
Burgundy
7 oz.
100% Cotton Ring
Spun Jersey
Sizes | 0103



103W710FG **3W710FG**
Forest Green
7 oz.
100% Cotton Ring
Spun Jersey
Sizes | 0103

0103

0103							
REG	M	L	XL	XXL	LT	XLT	2XT 3XT 3X 4X
TALL							
BIG							



POCKET PERFORMANCE T-SHIRT



POCKET PERFORMANCE T-SHIRT



Chest Pocket with Reinforcement
for Durability
Imported

Chest Pocket with Reinforcement
for Durability
Imported



MOISTURE WICKING



MOISTURE WICKING



103W701CR **3W701CR**
a Curren Red
5 oz.
60% Cotton/40% Polyester
Sizes | 010V



103W701HG **3W701HG**
a Hazel Green
5 oz.
60% Cotton/40% Polyester
Sizes | 010V



103W701OB **3W701OB**
a Oxford Blue
5 oz.
60% Cotton/40% Polyester
Sizes | 010V



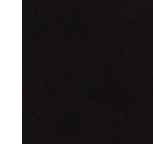
103W701NK **3W701NK**
a Nickel
5 oz.
60% Cotton/40% Polyester
Sizes | 010V



103W701KH **3W701KH**
Khaki
5 oz.
60% Cotton/40% Polyester
Sizes | 010V



103W701BK **3W701BK**
Black
5 oz.
60% Cotton/40% Polyester
Sizes | 010V



103W702BK **3W702BK**
a Black
5 oz.
60% Cotton/40% Polyester
Sizes | 0063



103W702OB **3W702OB**
a Oxford Blue
5 oz.
60% Cotton/40% Polyester
Sizes | 0063

010V							
REG	M	L	XL	XXL	LT	XLT	2XT 3XT 3X 4X
TALL							
BIG							

0063					
REG	M	L	XL	XXL	3X 4X
TALL					
BIG					



Wrangler
RIGGS
WORKWEAR

WORK HOODIE

WORK HOODIE | TOUGH LAYERS



Drawcord Adjustable Hood
Hidden Zipper Pocket on Wearers Left Chest
Tape Measure Reinforcement on the Wearer's Front Pocket
Full Zip Front
Imported



3 PIECE HOOD



TAPE MEASURE REINFORCEMENT



TOUGH & DURABLE

	103W196GY a	3W196GY Granite Grey 11.5 oz. 80% Cotton/20% Polyester Sizes 012H
	103W196BK a	3W196BK Caviar 11.5 oz. 80% Cotton/20% Polyester Sizes 012H
	112334081	3W196 Navy 11.5 oz. 80% Cotton/20% Polyester Sizes 012H

012H												
	S	M	L	XL	XXL	LT	XLT	2XT	3XT	2X	3X	4X
REG	•	•	•	•	•	•	•	•	•	•	•	•
TALL	•	•	•	•	•	•	•	•	•	•	•	•
BIG	•	•	•	•	•	•	•	•	•	•	•	•



RANGER PANT

Wrangler
RIGGS
WORKWEAR
FOR WOMEN



RANGER | REGULAR FIT



Straight Leg
Double Knee with Dirt Drop Vent
Hidden 1000 Denier **CORDURA**® Fabric Lined Back Pockets
Reinforced Cargo Pockets with Hidden Cell Pocket on Wearer's Right
Tool Loop
Imported



STRETCH

RIPSTOP
FABRIC

CORDURA
FABRIC

	103WF60BK	3WF60BK Black 8.25 oz. Ripstop 65% Cotton/ 30% Polyester/5% Elastane Sizes G27Y
--	-----------	---

G27Y												
	0	2	4	6	8	10	12	14	16	18	20	
Inseam	30	•	•	•	•	•	•	•	•	•	•	•
	32	•	•	•	•	•	•	•	•	•	•	•
	34	•	•	•	•	•	•	•	•	•	•	•

WOMEN'S
WRANGLER RIGGS



TECHNICAL CARPENTER PANT
WOMEN'S 5 POCKET JEAN

TECHNICAL CARPENTER PANT



STRETCH



TOUGH & DURABLE



Nylon Reinforced Back Pockets, Knee Pads, Hem Guard (Kickplate), Utility Pockets

Pockets to Insert Knee Pads
Reflective Trim Throughout Pant to Keep You Safe and Seen
Multiple Utility Tool Pockets
Performance Waistband
Imported



112335374 Dark Khaki
6.4 oz.
86% Cotton/13% Nylon/
1% Elastane
Sizes | G27Y

G27Y	
Inseam	0 2 4 6 8 10 12 14 16 18 20
30	• • • • • • • • • • • •
32	• • • • • • • • • • • •
34	• • • • • • • • • • • •

WOMEN'S 5 POCKET | REGULAR FIT

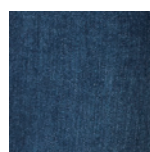


STRETCH

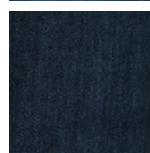


TAPE MEASURE REINFORCEMENT

Mid-Rise
Reinforced Back Pockets
Patented Reinforcement on Front Pocket
Fits Over Boots
Imported



103WF05LS **3WF05LS**
Light Stone
11.5 oz.
74% Cotton/25% Polyester/
1% Spandex
Sizes | G27Y



103WF05DR **3WF05DR**
Dark Rinse
11 oz.
74% Cotton/25% Polyester/
1% Spandex
Sizes | G27Y



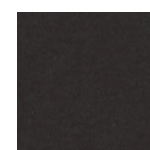
HOODIE
WORK JACKET



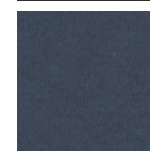
HOODIES



Full Zip
Three Piece Hood with Snap Closure at Neck
Kangaroo Pockets at Waist with Pocket Reinforcement
Rib Knit Cuff and Waistband
1/12 Solid, Hanging
Imported



103WF19BK **3WF19BK**
Black
8.5 oz.
52% Cotton/48% Polyester
Sizes | 2D3794



103WF19BS **3WF19BS**
Blue Sea
8.5 oz.
52% Cotton/48% Polyester
Sizes | 2D3794

2D3794						
REG	S	M	L	XL	XXL	3XL
•	•	•	•	•	•	•

WORK JACKET



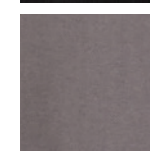
Lower Front Hand Pockets with Zipper Closure
Pencil / Tool Pocket on Left Sleeve
Rib Knit Cuff
1/12 Solid, Hanging
Imported



MOISTURE WICKING



103WF18BK **3WF18BK**
Black
8 oz.
60% Cotton/
40% Polyester Fleece
Sizes | 06AG



103WF18CH **3WF18CH**
Charcoal
8 oz.
60% Cotton/
40% Polyester Fleece
Sizes | 06AG

06AG						
REG	S	M	L	XL	XXL	3XL
•	•	•	•	•	•	•

WOMEN'S
WRANGLER RIGGS



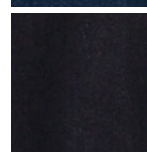
CLASSIC FIT JEANS



Regular Seat and Thigh
Sits at the Waist
Fits Over Boots
Imported



1039902PW **39902PW**
a Prewashed
14.75 oz.
100% Cotton Denim
Sizes | A68F



10399020B **399020B**
a Black
13 oz.
100% Cotton Denim
Sizes | A51D

A51D		28	29	30	31	32	33	34	36	38	40	42	44	46	48	50	52	54
Inseam	30																	
	32																	
	34																	
	36																	

A68F		29	30	31	32	33	34	35	36	38	40	42	44	46	48	50	52	54	56	58	60
Inseam	29																				
	30																				
	31																				
	32																				
	34																				

RELAXED FIT JEANS



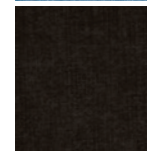
Relaxed Seat and Thigh
Sits at the Waist
Fits Over Boots
Imported



1035001AI **35001AI**
a Antique Indigo
14.5 oz.
100% Cotton Denim
Sizes | A104



1035001VI **35001VI**
a Vintage Indigo
14.75 oz.
100% Cotton Denim
Sizes | A104



10350020B **350020B**
a Black
13 oz.
100% Cotton Denim
Sizes | A104

A104		28	29	30	31	32	33	34	35	36	38	40	42	44	46	48	50	52	54	56	60	62	64	66
Inseam	28																							
	29																							
	30																							
	32																							
	34																							

008Y		M	L	XL	XXL	LT	XLT	2XT	3XT
REG	TALL								

013C		S	M	L	XL	XXL	LT	XLT	2XT	2X	3X	4X	5X	6X
REG	TALL													

DENIM



Left Chest Pocket with Button Through
Closure and Pencil Slot
Double Button Adjustable Cuffs
1/12 Solid
Imported



10RAL08DM **RAL08DM**
a Stonewash
6.0 oz.
100% Cotton Denim
Sizes | 008Y

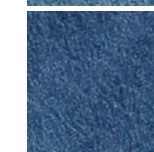
UNLINKED DENIM JACKETS



Adjustable Waist
Button Cuffs
Imported



10RJK30VI **RJK30VI**
a Vintage Indigo
14.5 oz.
100% Cotton
Heavyweight Denim
Sizes | 013C



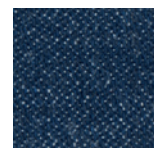
10RJK30AN **RJK30AN**
a Antique Indigo
14.5 oz.
100% Cotton
Heavyweight Denim
Sizes | 013C



COWBOY CUT® | 13 | ORIGINAL FIT



Authentic Five Pocket Styling
100% Cotton, Heavyweight Denim
Fits Over Boots
Imported
18 1/2" x 16 3/4" Leg Opening



100013MWZ **0013MWZ** Sizes | A100
1013MWZXS **13MWZXS** Sizes | A20A
Rigid Indigo
14.75 oz.
Sanforized® Denim

		A20A															
WAIST		29	30	31	32	33	34	36	38	40	42	44	46	48	50	52	54
Inseam	32																
	34																
	38																
	40																
	44																

		A100															
WAIST		27	28	29	30	31	32	33	34	35	36	37	38	40	42	44	46
Inseam	29																
	30																
	31																
	32																
	33																
	34																
	36																
	38																
40																	

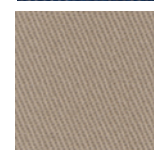
WESTERN WORKSHIRTS | CLASSIC FIT



Spread Collar
Authentic Western Yokes
Two Authentic Western Spade Flap Pockets with Snap Closure
Wrangler® Logo Ribbon Label on Left Pocket
Pencil Slot on Left Pocket
Wrangler® "W" Decorative Logo Stitch on Pockets
Authentic Western Three Snap Cuff with One Snap Sleeve Placket
Imported



10MS70119 **MS70119**
Indigo Denim (Firm Finish)
7 oz.
100% Cotton Indigo
1/12 Solid, Hanging
Sizes | 011B



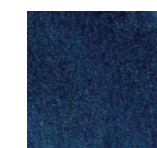
10MS70319 **MS70319**
Khaki
7.2 oz.
100% Cotton Stiff Twill
1/12 Solid, Hanging
Sizes | 011B

		011B										
		S	M	L	XL	XXL	LT	XLT	2XLT	3XLT	3X	4X
REG												
TALL												
BIG												

DENIM JACKET | UNLINED



Traditional Western Styling
Front Pockets with "W" Stitching
Slash Front Pocket



1074145PW **74145PW**
Prewashed
100% Cotton, Heavyweight
Broken Twill
Imported
Sizes | 009W

		009W									
		S	M	L	XL	XXL	MT	LT	XLT	2XT	
BIG											
TALL											

MEN'S 20X FR JEANS



STYLE	DESCRIPTION	WAIST	SEAT	THIGH	KNEE	BOTTOM	FT RISE	BK RISE
10FR42MW/10FRAC42	Vintage Boot	34	43	25 1/4	17 5/8	18 1/2	11	15



MEN'S RETRO FR JEANS

STYLE	DESCRIPTION	WAIST	SEAT	THIGH	KNEE	BOTTOM	FT RISE	BK RISE
10FR77	Slim Boot	34	43	26	17 5/8	18 1/2	10 5/8	14 1/2



MEN'S RIGGS WORKWEAR FR PANTS

STYLE	DESCRIPTION	WAIST	SEAT	THIGH	KNEE	BOTTOM	FT RISE	BK RISE
10FR3W020	Carpenter	32 3/4	44	27 5/8	20	18	12 5/8	15 3/4
10FR3W02K/FR3WAC	Advanced Comfort Carpenter	34 1/8	45	28 3/8	20 3/8	18 3/8	12 5/8	16 1/4
10FR3W050	Five Pocket	32 3/4	43	26 1/4	19	16 1/2	12 1/8	15 1/2
10FRAC45	Technician	33 1/2	41 5/8	26 3/8	19 1/4	17	12	15 1/2
10FRAC50	Advanced Comfort Five Pocket	32 3/4	43	26 1/4	19	16 1/2	12 1/8	15 1/2



MEN'S WESTERN FR JEANS

STYLE	DESCRIPTION	WAIST	SEAT	THIGH	KNEE	BOTTOM	FT RISE	BK RISE
10FR13	Original Fit	33	42 1/2	25	18 1/2	16 3/4	11 7/8	15 1/4
10FR31	Relaxed Fit	33	43 1/4	26 1/8	19	17	11 7/8	15 1/8
10FR36	Slim Fit	33 1/2	39 3/4	23 3/8	17 1/2	16 1/2	11	14 3/8
10FR47 / FRAC47	Regular Fit	33 1/2	42	25 3/8	18 1/2	16 3/4	11	15 1/4

Fit Guideline Measurements Based on 32/32.

WOMEN'S WESTERN FR JEANS

STYLE	DESCRIPTION	WAIST	SEAT	THIGH	KNEE	BOTTOM	FT RISE	BK RISE
10FRW10	URJ Cash Fit	32 1/2	40 1/2	24 1/4	16 1/4	16 7/8	9 3/8	14 3/4
10FRAC1/10FRAC9	MAE Boot Fit	31	38	21 7/8	15 5/8	17 1/2	9 5/8	14 1/8
10FRW31	Utility Pant	32 1/8	38 7/8	23 1/2	15	15 7/8	10 5/8	14 7/8

MEN'S RIGGS WORKWEAR JEANS



STYLE	DESCRIPTION	WAIST	SEAT	THIGH	KNEE	BOTTOM	FRT RISE	BK RISE
103W001	Workhouse Jean - Relaxed Fit	32 3/4	42 7/8	28 3/8	20 1/4	18	12 5/8	15 3/4
103W020	Carpenter Jean - Relaxed Fit	32 3/4	42 7/8	28 3/8	20 1/4	18	12 5/8	15 3/4
103W030	Utility Jean - Relaxed Fit	32 3/4	42 7/8	28 3/8	20 1/4	18	12 5/8	15 3/4
103W031	Utility Pant - Regular Straight Fit	33 1/2	42 3/8	25 7/8	17 7/8	16 5/8	11 1/2	16 1/4
103W040	Contractor Jean - Relaxed Fit	32 3/4	42 7/8	28 3/8	20 1/4	18	12 5/8	15 3/4
103W045	Technician Pant - Relaxed Fit	33 1/2	41 5/8	26 3/8	19 1/4	17	12	15 1/2
103W050	Five Pocket Jean - Relaxed Fit	33 1/2	42 3/4	26 7/8	19 5/8	17	11 3/4	15 1/2
103W060	Ranger Pant - Relaxed Fit	33 1/2	42 5/8	27 7/8	20 3/8	18	12 3/8	15 5/8
103W341	Work Short - Regular Fit	33 1/2	44	27 1/2		22	12	15 3/8
103W345	Technician Short - Relaxed Fit	33 1/2	41 7/8	26 1/4		22 5/8	12 1/8	15 1/2
103W360	Ranger Short - Relaxed Fit	33 1/2	43 1/8	28		23	12 1/2	15 3/4
103W362	Stretch Ranger Short - Relaxed Fit	33 1/2	42 3/4	27 7/8		23	12 5/8	15 3/4
112335410	Technical Carpenter Pant	33 1/2	41 7/4	25 1/4	18 1/2	17	12 1/2	16
112335295	Nylon Work Pant	33 1/2	41 7/4	25 1/4	18 1/2	17	12 1/2	16

WOMEN'S RIGGS WORKWEAR JEANS

STYLE	DESCRIPTION	WAIST	SEAT	THIGH	KNEE	BOTTOM	FRT RISE	BK RISE
103WF05	Five Pocket Boot Cut	30 7/8	37 7/8	21 7/8	15 3/8	17 1/2	9 5/8	14 1/8
103WF60	Slim Ranger	31 1/2	38 1/2	23 1/2	17	16	10 3/8	14 1/2
112335374	Technical Carpenter Pant	31	38 1/8	24 1/8	17	16	10 1/8	14 1/2

Women's Fit Guideline Measurements Based on 6/32. Shorts based on Size 6.

MEN'S RUGGED WEAR JEANS



STYLE	DESCRIPTION	WAIST	SEAT	THIGH	KNEE	BOTTOM	FRT RISE	BK RISE
1039902	Classic Fit	32 1/4	42	24 1/8	18 1/4	16	11 1/2	15
1035001	Relaxed Fit	34	42	25 7/8	19 1/4	17	11 5/8	15 1/8

MEN'S WESTERN JEANS



STYLE	DESCRIPTION	WAIST	SEAT	THIGH	KNEE	BOTTOM	FRT RISE	BK RISE
1013MWZ	Original Fit	33	42 1/2	24 7/8	18 1/2	16 3/4	11 7/8	15 1/4



As Soon As Possible

Designated styles in this catalog are available for immediate shipping.
As Soon As Possible orders will ship in five (5) to ten (10) days after being entered.

As Soon As Possible orders can be communicated by:

Telephone  1.800.888.8010

Fax  1.800.283.3113

Mail  Wrangler® Order Entry
P.O. Box 21488
Greensboro, NC 27420

Email Customer Service
Wrangler.cs@kontoorbrands.com

Product Warranty

Every Wrangler® product carries a one-year warranty, which covers actual defects in materials or workmanship. Consumer satisfaction is a key element in the successful marketing of Wrangler® merchandise at retail.

Return Goods Policy

Only authorized returns will be accepted by our shipping locations. In the event you find it necessary to request permission to return goods, authorization must be obtained from:

Product Warranty

P.O. Box 21488

Greensboro, North Carolina 27420

- Request for return goods must be made within 30 days from date of shipment.
- Authorization for return will not be made on merchandise shipped more than 30 days prior to the request for return.
- Correspondence pertaining to return goods should furnish the invoice number, reason for request for return, and other sufficient information so that immediate consideration can be given for use on the returned merchandise. Only returns with this label will be accepted at our shipping locations.
- Any merchandise returned after proper authorization must be received at our plants in at least as good condition as when originally shipped. Our receiving plants will have the authority to judge on this matter and to recommend adjustments in credits if such be deemed appropriate. Defectives from Retail Account should be shipped to:

Distribution Center

12173 Rojas Drive, P.O. Box 909
El Paso, TX, 79936

- Small parcel post returns of defective merchandise from consumers are excepted from this policy and may be sent without authorization to:

Wrangler® Quality Control Department

1421 South Elm/Eugene Street,
Greensboro, North Carolina 27406

- Your cooperation with this policy will be greatly appreciated and will help us provide prompt and efficient service.
Our hours of operation are Monday-Friday 8 am to 5 pm EST

Wrangler[®]

Wrangler, a Kontoor Brands Company.
All Rights Reserved.

KONTOOR[™]